

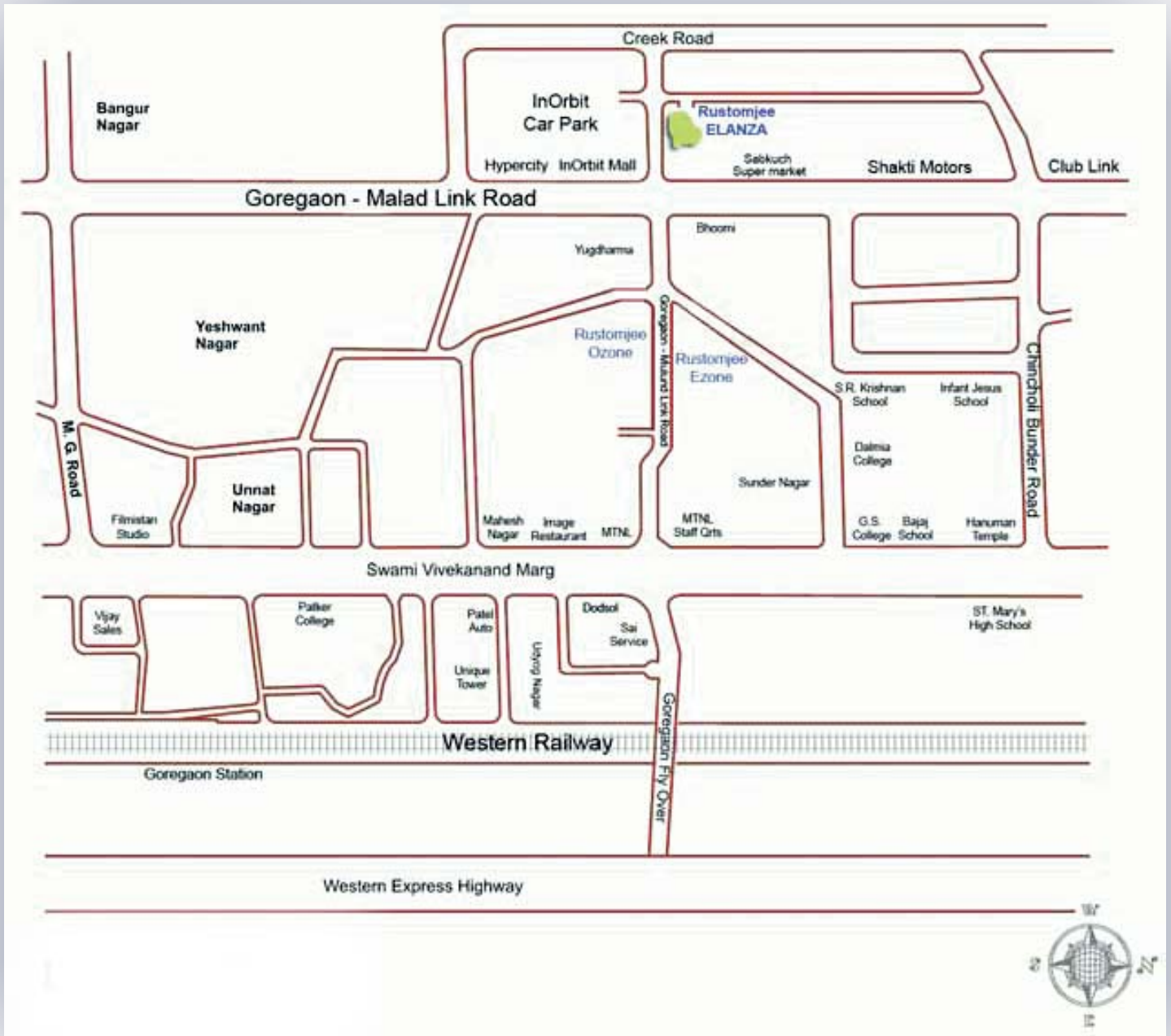
Rustomjee

ELANZA



Step into Elanza -Your private haven of comfort. Nestled in the heart of Malad, Elanza offers you a choice of 3 elegant towers with 2 and 2.5 BHK apartments. All this across 30 floors. Within your complex, you benefit from a host of luxury amenities including a clubhouse and swimming pool. And just minutes away from your comfortable home, you can enjoy hours of entertainment in two of Mumbai's biggest malls and hyper city mall.

Location



Located in Malad, Mumbai in commercial zone next to In-Or-Bit shopping mall and multiplex near Mind Space Commercial complex and Hyper city. The project is in close proximity to several IT/ITES/BPO &KPO offices. Madh Island is a short drive away from Elanza, Ryan International School a premium educational institute is nearby. This project is a mere 15mins drive from Malad Railway Station. The Sahar International Airport is an approximate 30 minutes drive from the Elanza.

Amenities



Clubhouse with indoor games



Grand entrance



2 high speed passenger lift
and 1 stretcher lift



Garden for Children

Specifications



Living Room

Large living room with dining area
Vitrified flooring
No column offsets

Kitchen

Granite cooking platform with stainless steel sink
Dado tiles, exhaust fan and water purifier
Provision for washing machine



Bathrooms/Toilets

Ultra modern bathroom fittings, storage type water heater & exhaust fan
Ceramic tile flooring and dado tiles up to suitable height

Security features

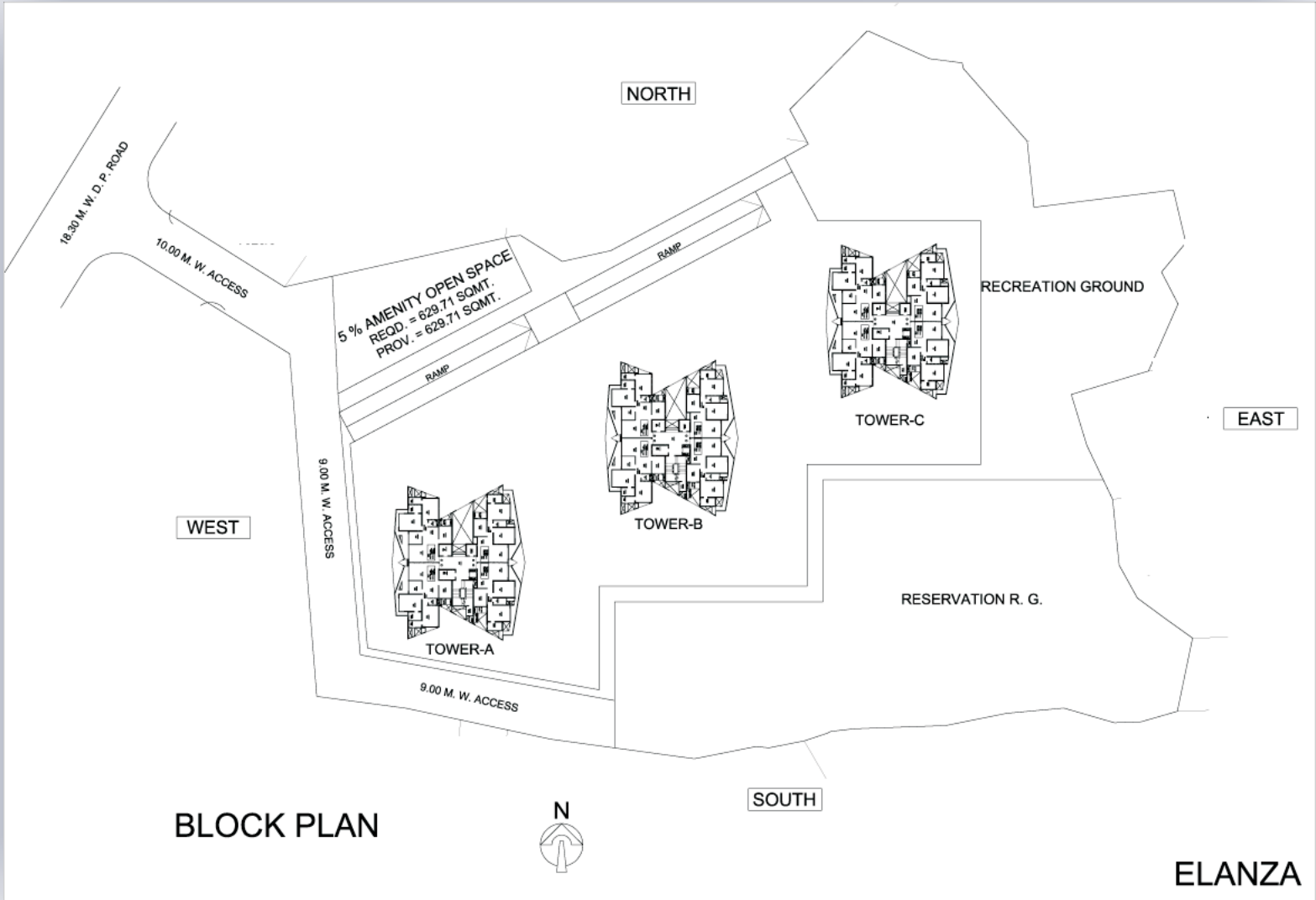
Power back up for common area & passenger lift
Video door Phones & intercom
Advance safety system for fire protection
Earthquake resistant



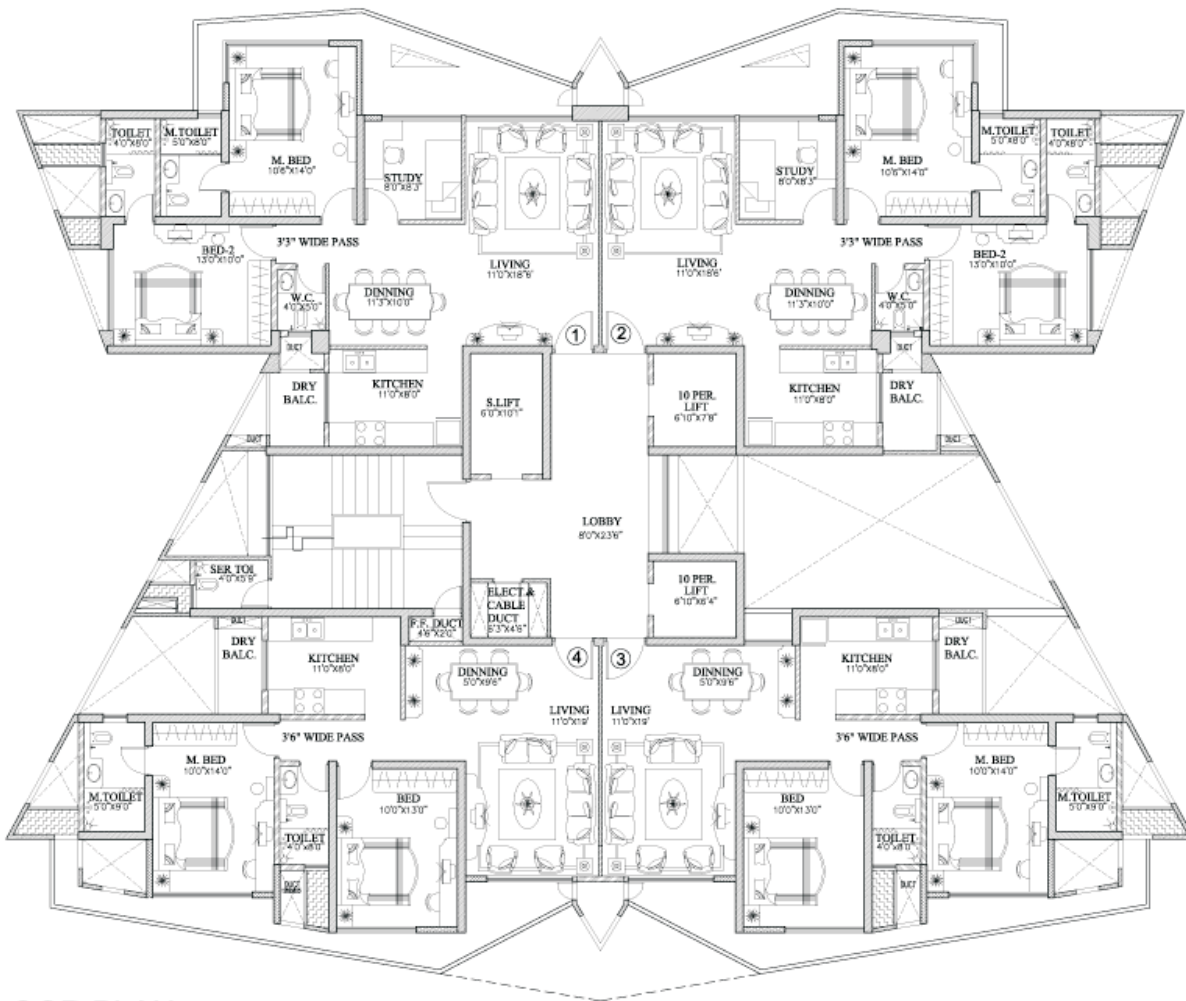
General

3 Phase supply in each flat with distribution boards and latest life saving electrical safety features like MCB and ELCB.
Concealed copper wiring with modular switches
Attractive main door with teakwood frame
Powder coated/aluminum sliding windows
Provision for A/C

Layout Plan



Typical Floor Plan



TYPICAL FLOOR PLAN

PROPOSED RESIDENTIAL BUILDING AT MALAD (W)

Apartment Type, Size

Type	Size (sq.ft.)
2BHK	1125

Prices are available on request

Architect: Sanjay Puri

Developer

The Keystone Group started construction in Mumbai in 1996 and rapidly rose to be a premiere Construction Company due to its uncompromising commitment to the highest level of quality construction as well as its consistency in delivery schedules. The first Indian Real Estate Development Company to get an ISO 9001 - 2000 certification their brand "Rustomjee" is the stands for Quality, Consistency and Value for money.

The group has always strived to achieve a goal of 100 % satisfied customer base. Keystone Group has till date launched, completed and delivered innumerable residential complexes, premium homes and educational institutions. Their illustrious portfolio of prime projects includes Central Park, Buena Vista, La Solita, Regal, Regency, Residency, Royale, 9 JVPD, The Shimmer, Adarsh Regal and commercial complexes such as Rustomjee R-cade, Almar Arcade, Gagan Shopping Arcade, Regal Commercial Space.

Booking & Payment

Booking can be made in FEW EASY STEPS.

1. Identify your apartment: Our Property Advisor will assist you with full details of the project, viz Floor Plan, Application Form, Cost Break Up, Payment Schedule and other details.
2. Fill up the Application Form and send the same to our nearest office along with booking amount.
3. Upon clearing of the cheque you will be sent the Money Receipt, Sale Agreement/Allotment letter.
 - Cheques/Drafts to be issued in favor of developer
 - If you require site visit by friend or relative, it can be arranged within 24 hours
 - Home finance options are available from leading banks.

Our Expert Property Advisors are available 24x7 to assist you in finalising and booking of your property.